



GMT Constitutional Area 1, Group M

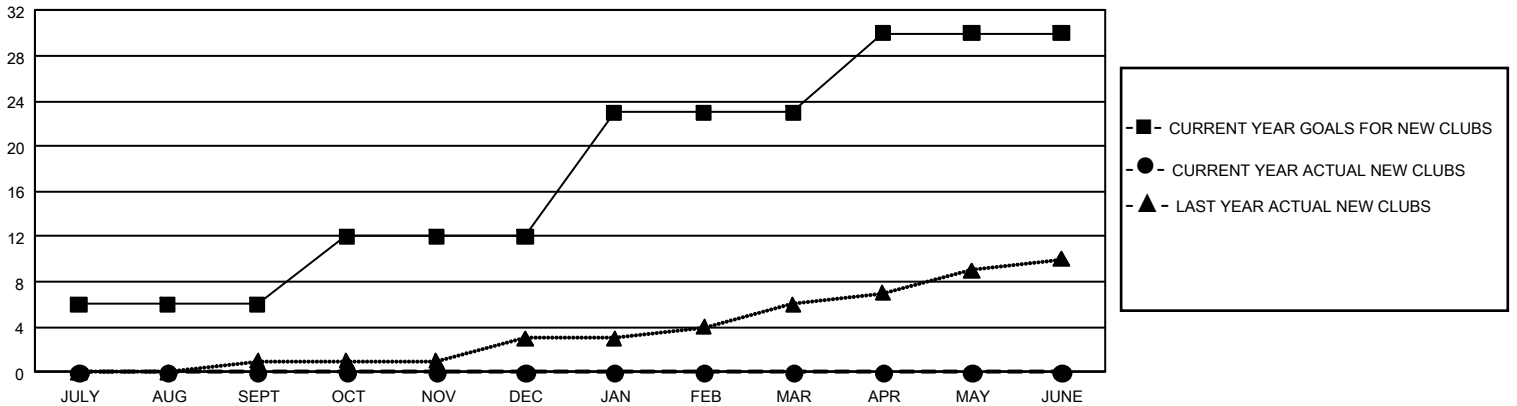
GMT: OPEN

REPORT DOES NOT INCLUDE CLUBS IN UNDISTRICTED AREAS.

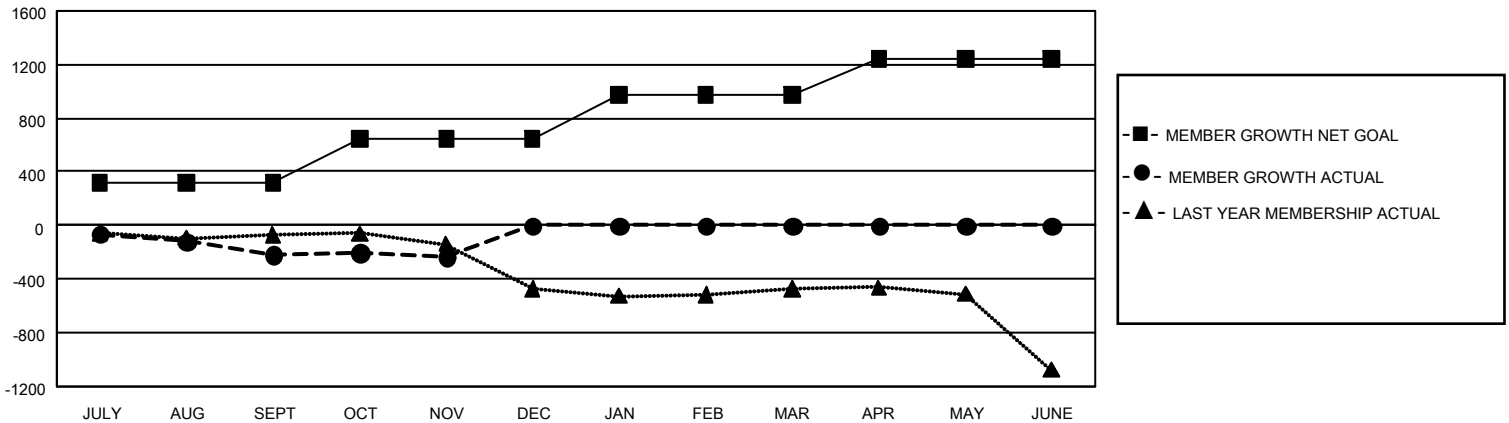
| Clubs | | | |
|-----------------------|---------------|-----------|---------------|
| RESULTS FOR 2019-2020 | | | |
| QUARTER | NEW CLUB GOAL | NEW CLUBS | DROPPED CLUBS |
| JULY/AUG/SEPT | 18 | 0 | 6 |
| OCT/NOV/DEC | 18 | 0 | 1 |
| JAN/FEB/MAR | 33 | 0 | 0 |
| APR/MAY/JUNE | 21 | 0 | 0 |

| Members | | | |
|-----------------------|------------------------|----------------------|--|
| RESULTS FOR 2019-2020 | | | |
| QUARTER | MEMBER GROWTH NET GOAL | MEMBER GROWTH ACTUAL | DROPPED MEMBERS ACTUAL (including transfers) |
| JULY/AUG/SEPT | 960 | 536 | 623 |
| OCT/NOV/DEC | 972 | 342 | 309 |
| JAN/FEB/MAR | 990 | 0 | 0 |
| APR/MAY/JUNE | 801 | 0 | 0 |

GOALS AND ACTUAL NEW CLUBS CUMULATIVE



GOALS AND ACTUAL MEMBERS CUMULATIVE



| | | |
|--------------------------------|---|--|
| <p>DROPPED CLUBS: 7</p> | <p>292 CLUBS OF 844 ADDED 1 OR MORE NEW MEMBERS</p> | <p><u>GENDER DISTRIBUTION</u></p> <p>MALE 12,063 (64.13%)</p> <p>FEMALE 6,746 (35.87%)</p> |
| | <p><u>DROPPED MEMBERS</u></p> <p>DECEASED 116</p> <p>CLUB CANCELLED 79</p> <p>OTHER 736</p> <p>TOTAL 931</p> | <p>CLICK HERE FOR CUMULATIVE MEMBERSHIP DATA</p> |